

OUR LAND
AND WATER

Toitū te Whenua,
Tōiora te Wai

Our Land & Water and Te Ao Maori Dr Tanira Kingi



OLW KAHUI



Traci Houpapa (Chair)

Sir Toby Curtis

Jim Peters

Erica Williams

Naomi Aporo

Dr Selai Letica (VM Theme Leader)

“Vision Mātauranga is generated in **partnership**
with Māori communities...

Mātauranga Māori is the **distinctive** set of
circumstances within Māori communities”

Dr Charles Royal

VM Seminar, Auckland University
4 November 2016

RESEARCH
SCIENCE
TECHNOLOGY


Vision Mātauranga

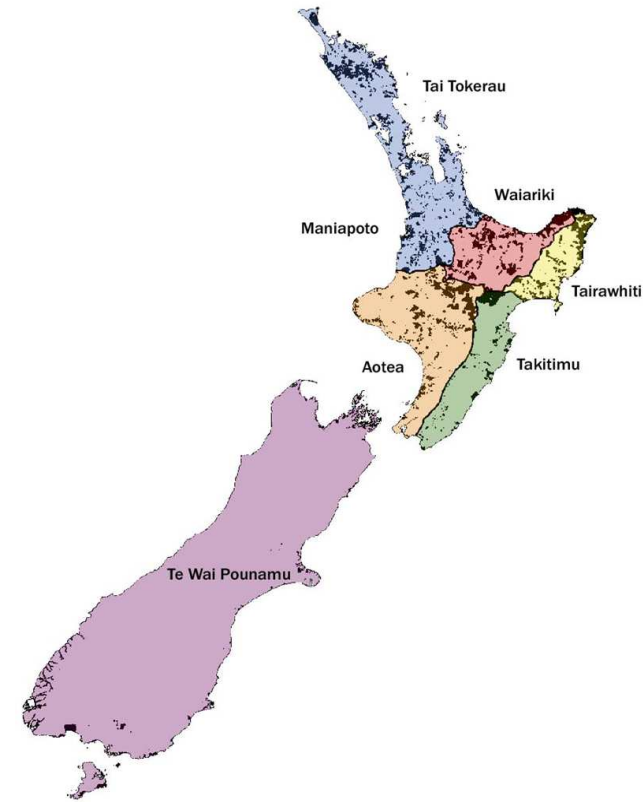
Unlocking the Innovation Potential of Māori
Knowledge, Resources and People



*to unlock the innovation potential of Māori knowledge, resources and
people to assist New Zealanders to create a better future.*

What is a Maori community?

- **MANA WHENUA** – land owners/kaitaki
- **MAORI INCS & TRUSTS** under the Te Ture Whenua Maori Act 1993
 - » Defined land area and ownership group
- **IWI AUTHORITIES** – Post Settlement Entities, iwi/hapu research units
 - » Defined iwi or hapu membership
- **MAORI RESERVATIONS** e.g. marae and urupa committees
- **COLLECTIVES & NATIONAL ORGS**



Priorities (2014)

- **PARTNERSHIPS** with Māori in land and water projects are consistent with Māori aspirations
- **MĀTAURANGA MĀORI** is recognised, respected and integrated in land and water policy decision-making
- **CAPACITY** to co-design solutions aligned with Maori land owner and community aspirations



OL&W VM STRATEGY (2015)

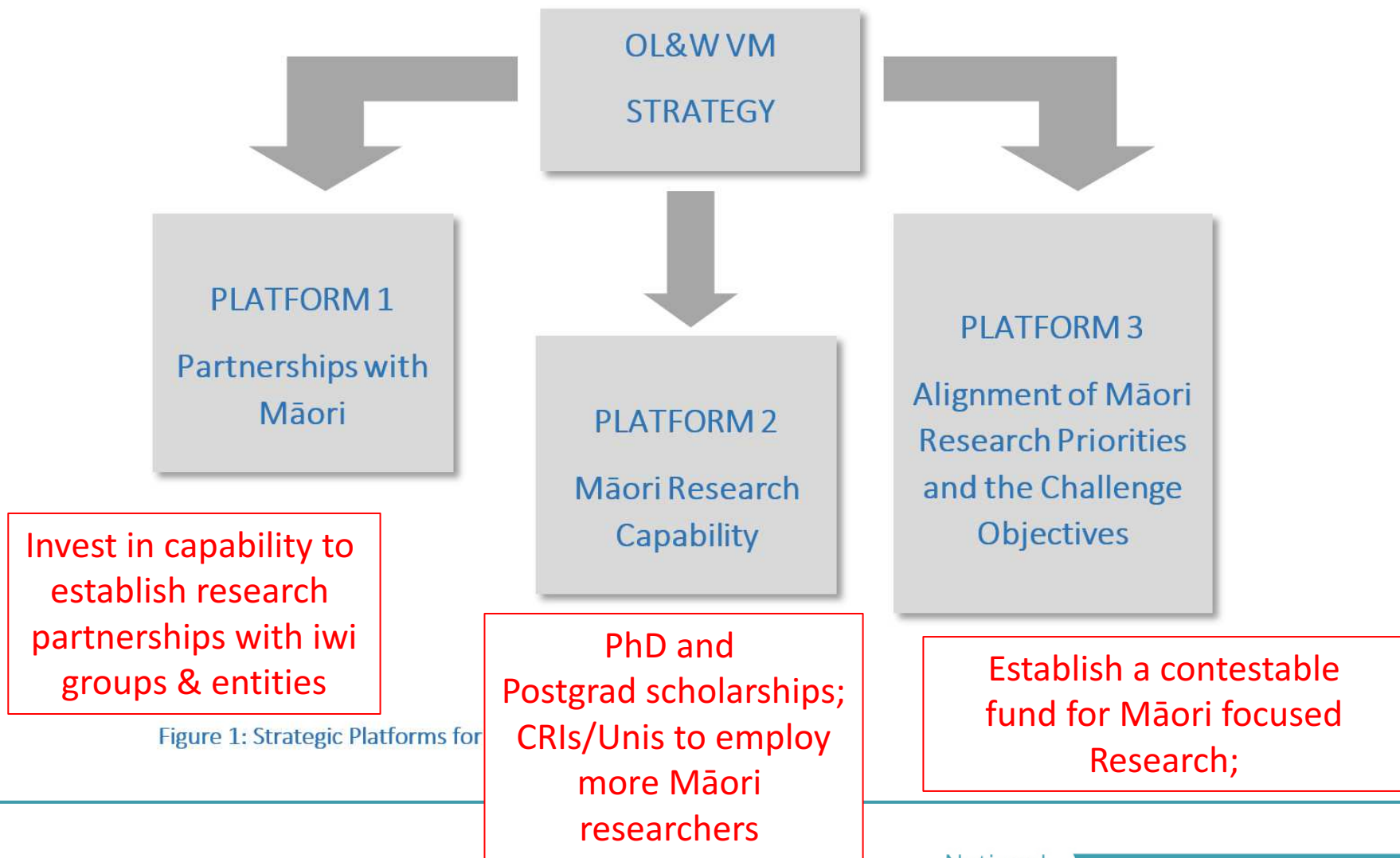
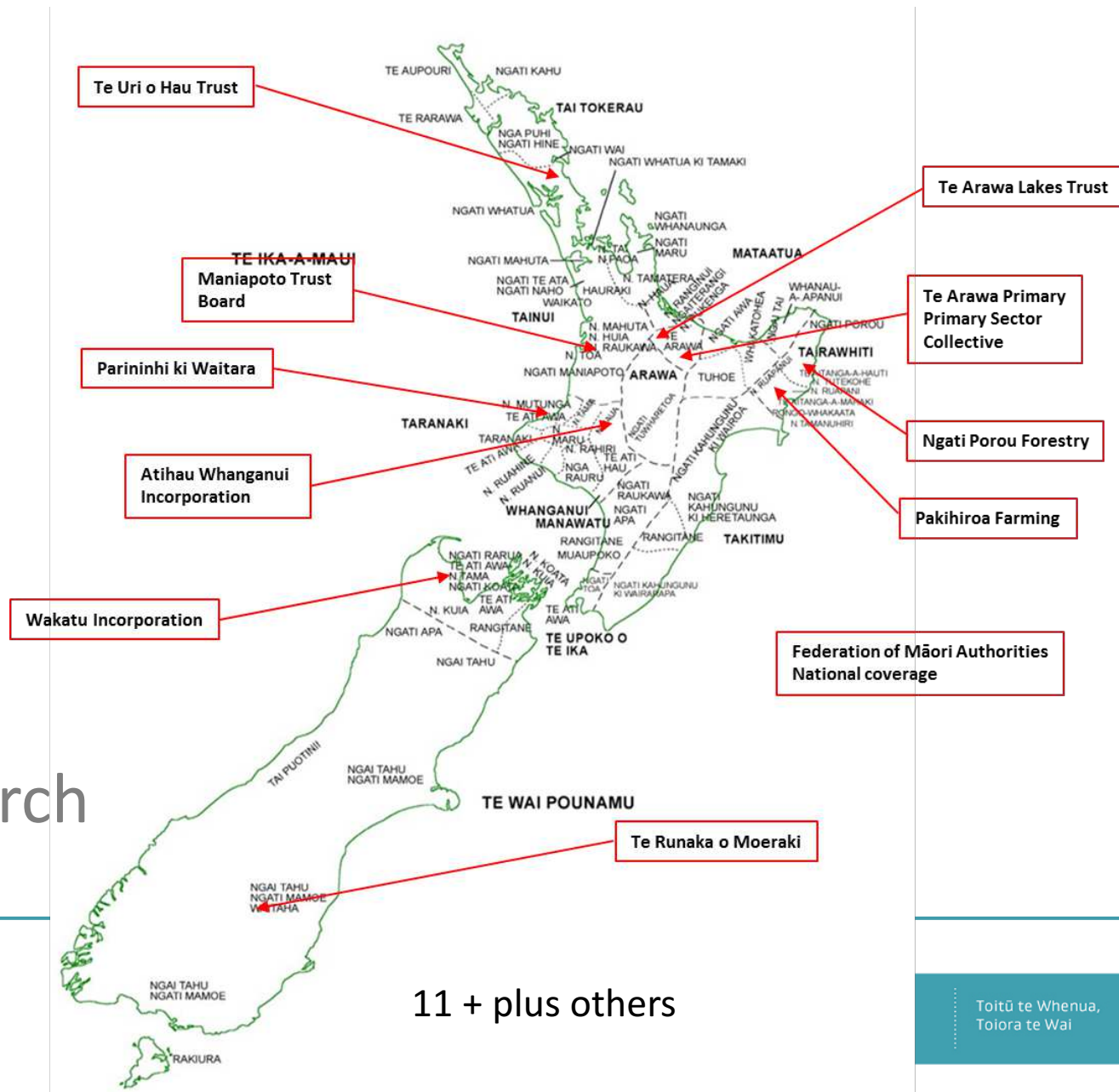


Figure 1: Strategic Platforms for

VM Programme (start Nov 2017)

- Clarify land & water issues, aspirations, research priorities
- Define Qs
- Identify research proposals



11 + plus others

Maori Community Investment & Innovation

- Diversified land use – dairy, S&B, forestry, horticulture
- UMF manuka brands + oil
- Alternative low emission dairy systems (e.g. sheep)
- Building high value milk processing and supply networks



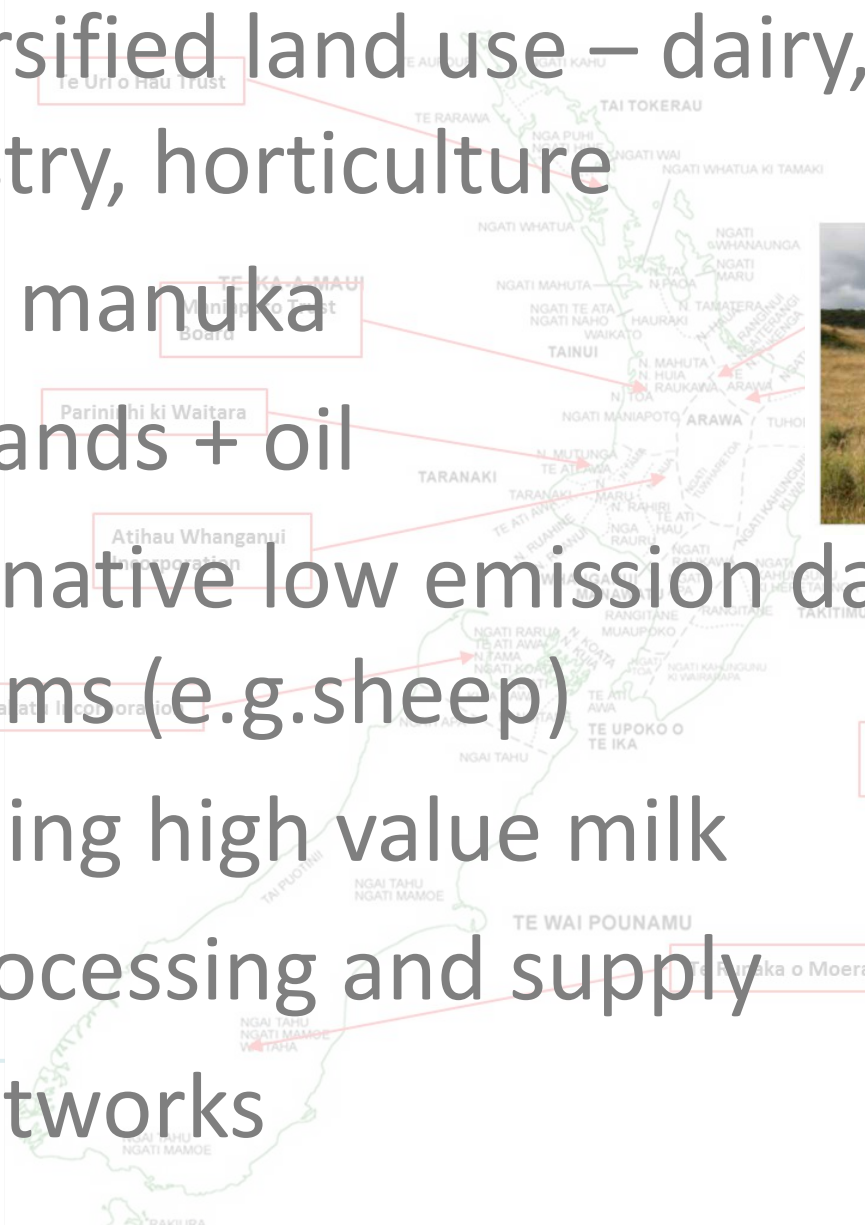
Te Arawa



Federation of Maori
National coverage



Te Anau o Moeraki



Innovation Partners....

- Trialing new crops (or new to NZ)
- Indigenous commercial tree production + nurseries
- Assessing high value wood processing
- Plant based protein
- Animal (beef)

Te Uri o Hau Trust

Maniapoto Board

Ngāi Tahu

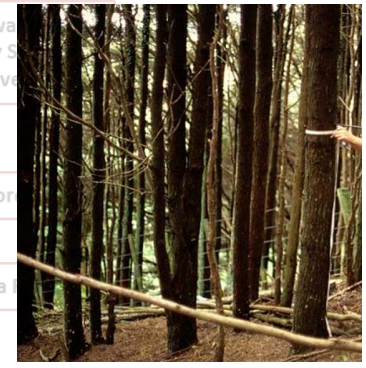
Ngāi Whanganui

Wakatu Incorporation

Ngāi Tahu



Te Arawa Primary Collective



Ngati Porou



Authorities



OUR LAND AND WATER

Toitū te Whenua, Tōiora te Wai

Innovation Partners....

- Measuring water quality
- Impacts of climate change and nutrient leaching & sediment on biodiversity



Te Uri o Hau Trust

Ngati Raukawa Consultative Board

Ngati Kahungunu

Atihau Whanganui Incorporation

Pakihiroa Farming

- Supporting schools to get involved in monitoring

Wakatu Incorporation

Federation of Māori Authorities

Te Runaka



Maori Engagement Research Opportunities

- Integrating Maori environmental frameworks
- Restoring the Mauri of water and land in partnership with local authorities
- Commercialising science and technology through business models that are consistent with environmental, social, cultural and economic aspirations
- Using intergenerational business models to preserve lands and grow business opportunities
- Committing long term government investment in research initiatives that deliver to Māori
- Confirming longitudinal studies that build on existing Maturanga Maori