

A satellite view of New Zealand, showing the North and South Islands, surrounded by the ocean and a layer of white clouds. The land is depicted in shades of green and brown, indicating vegetation and terrain.

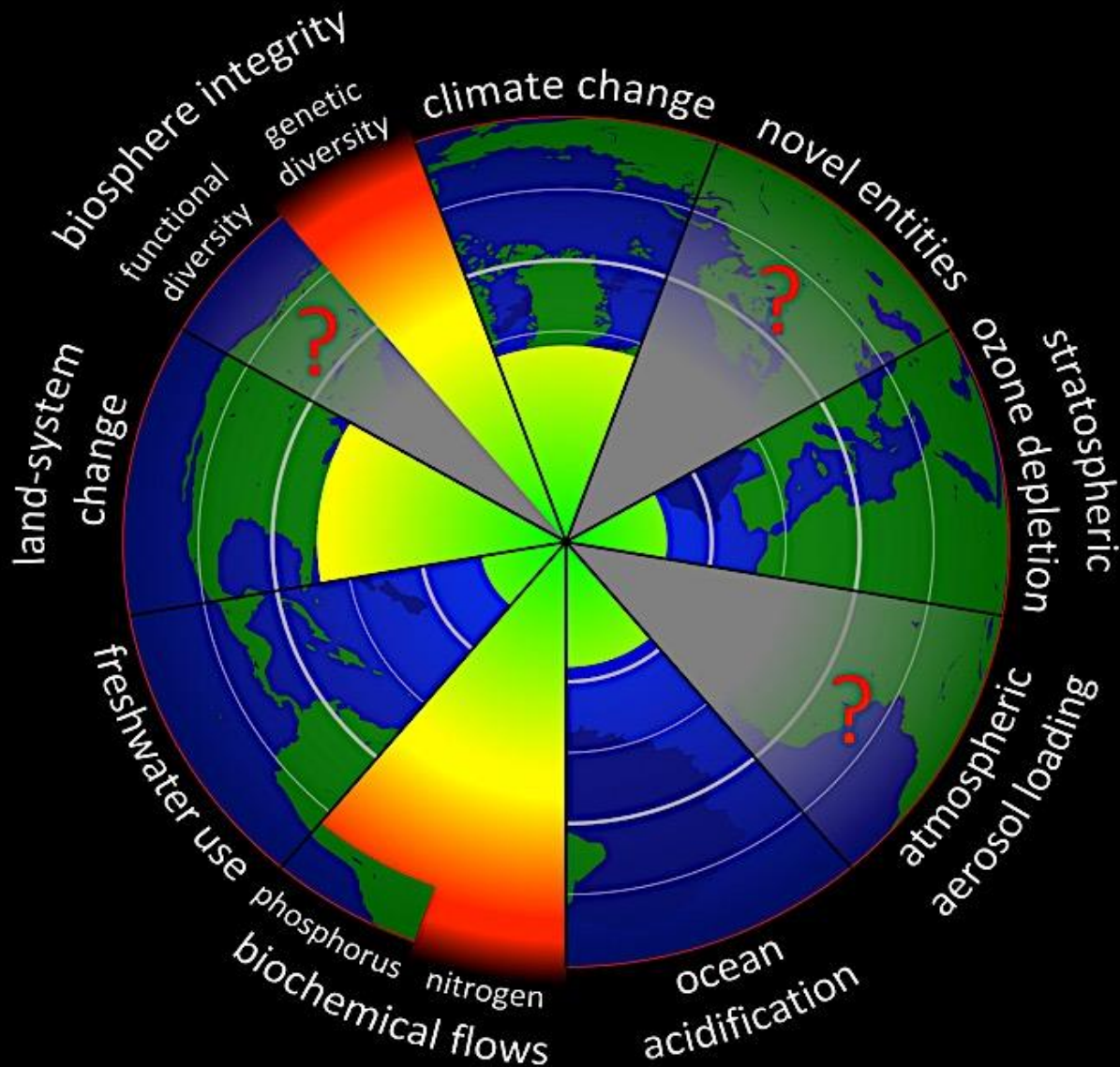
Reinventing paradise

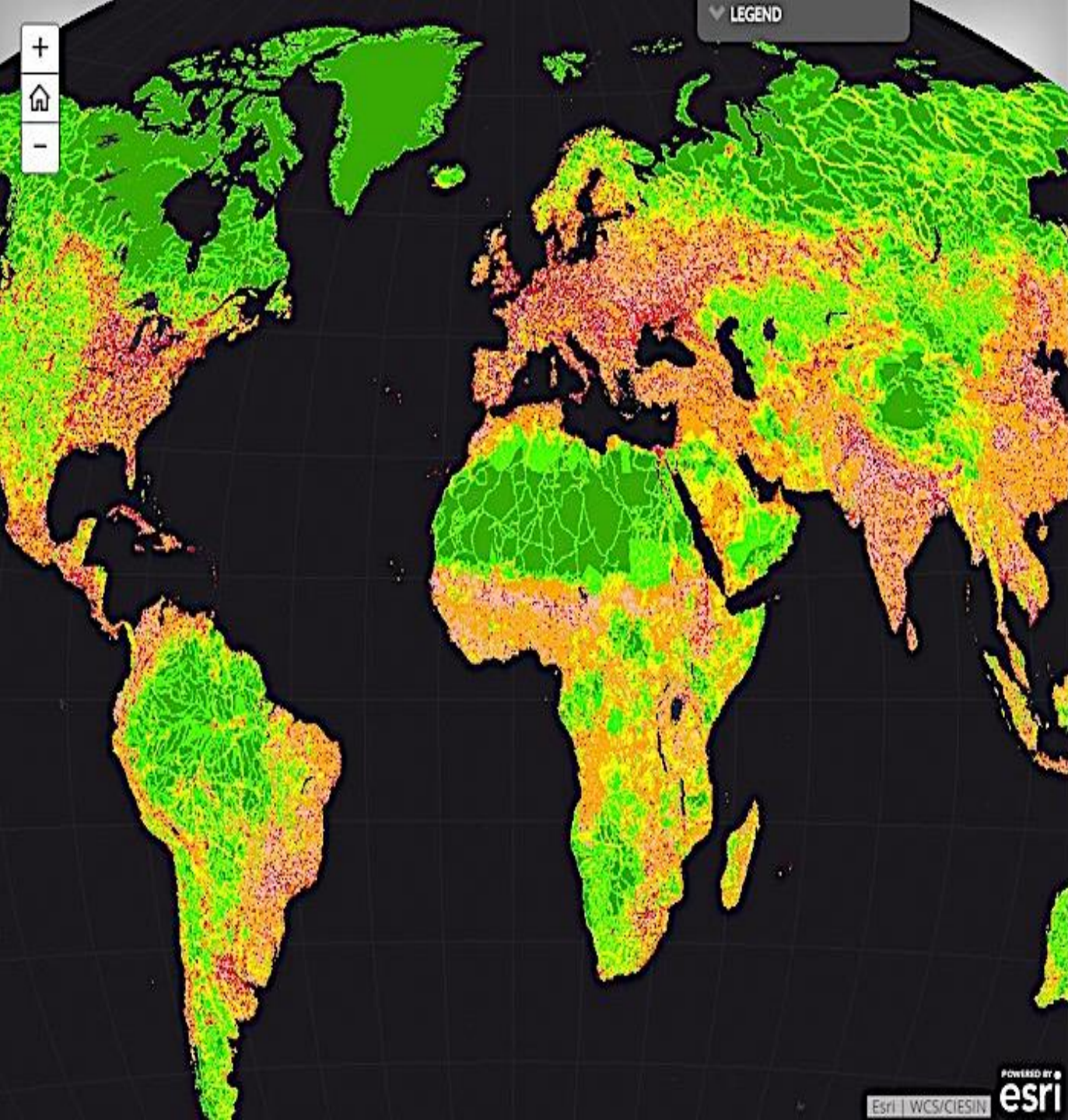
*...in the
Anthropocene*

Rod.Oram@NZ2050.com / [Twitter @RodOramNZ](https://twitter.com/RodOramNZ)
+64 21 444 839 / [Kiwiki on Facebook](#)

Rod Oram's introduction to
Our Land, Our Water NSC Symposium
Lincoln, April 11th, 2017

The Nine Planetary Boundaries





LEGEND

We are Living in The Age of Humans

75%

of Earth's land surface outside of ice sheets is managed by humans.

The map at left, developed by the Wildlife Conservation Society, reflects patterns of roads, urban concentrations, agriculture and other factors to show the extent of human modification of the landscape. Green represents minimal human impact; orange, red and purple reflect a high degree of human activity.

CLICK on the locations below to see examples of highly managed landscapes:

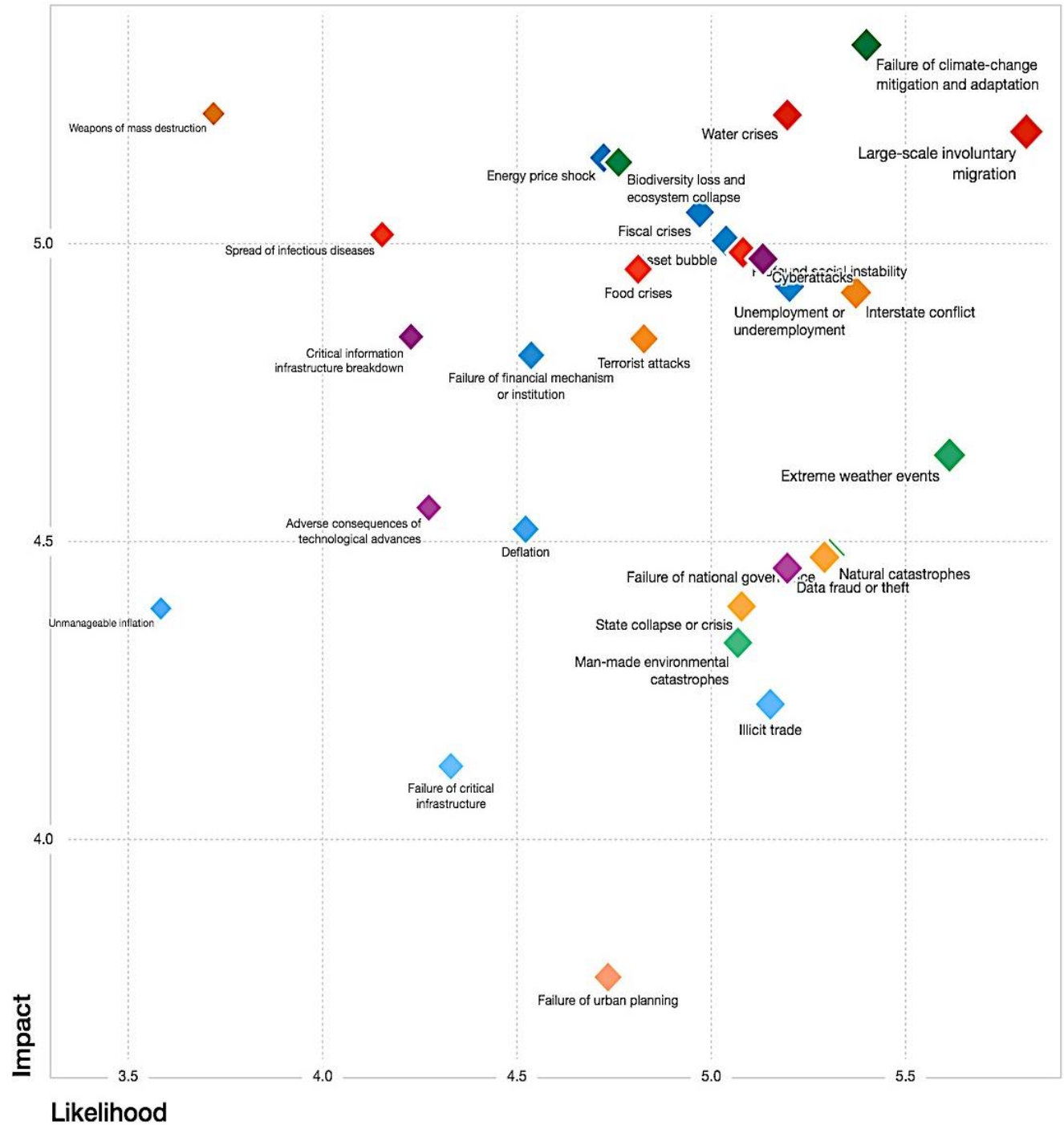
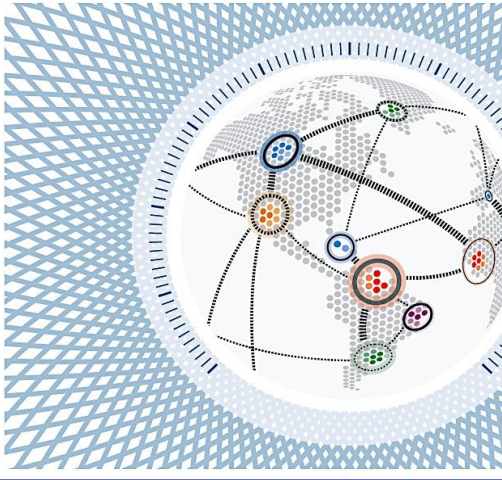
The Netherlands is home to this geometric array of fields and villages called the Zuiderzeewerken, an expanse of reclaimed land created by diking and draining portions of the Zuiderzee, a shallow inlet of the North Sea.

British Columbia, Canada has been transformed by intensive clear-cut logging. Vast woodland tracts in western Canada and the United States have become

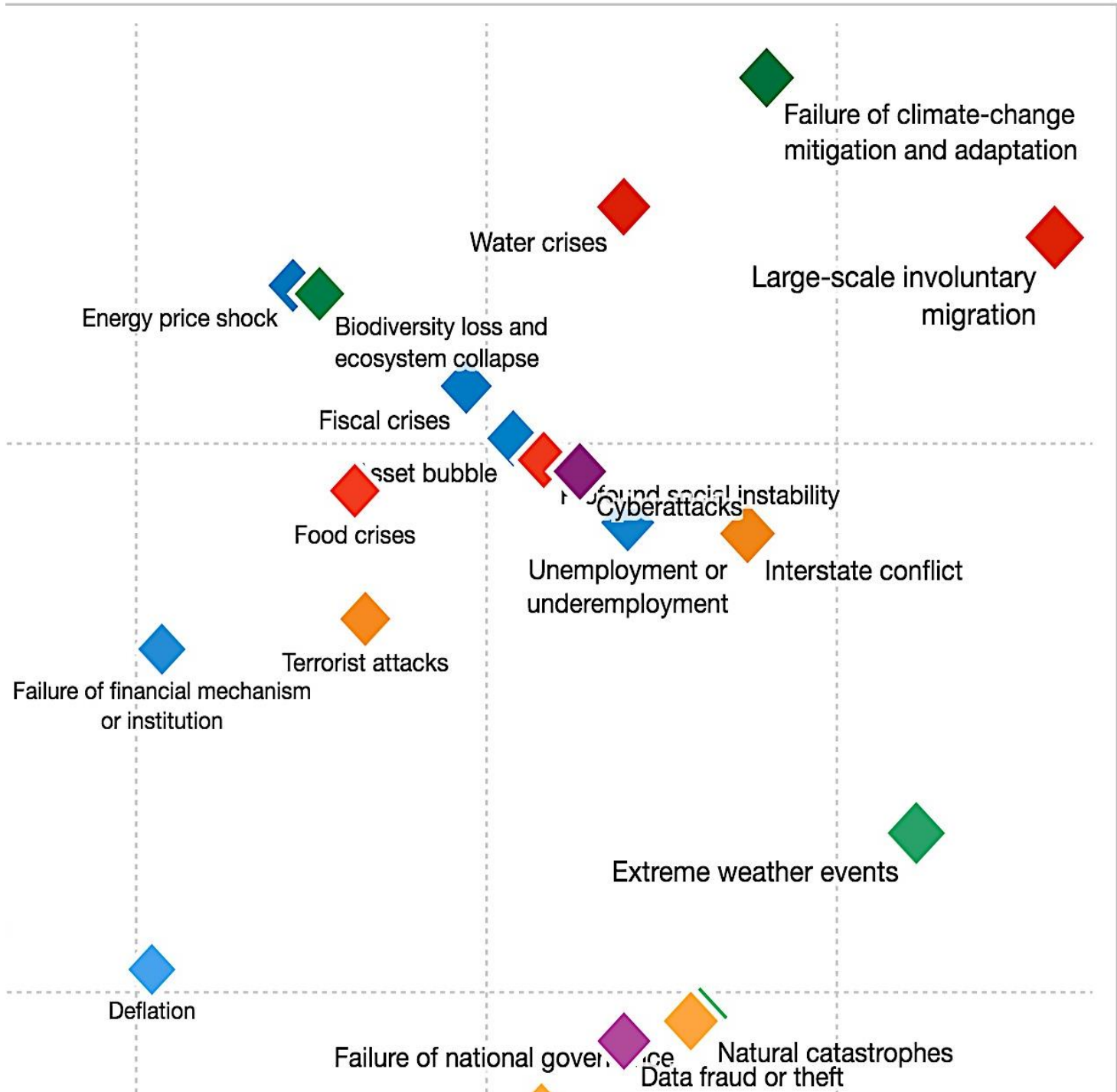
The 6th Great Extinction



The Global Risks Report 2016 11th Edition



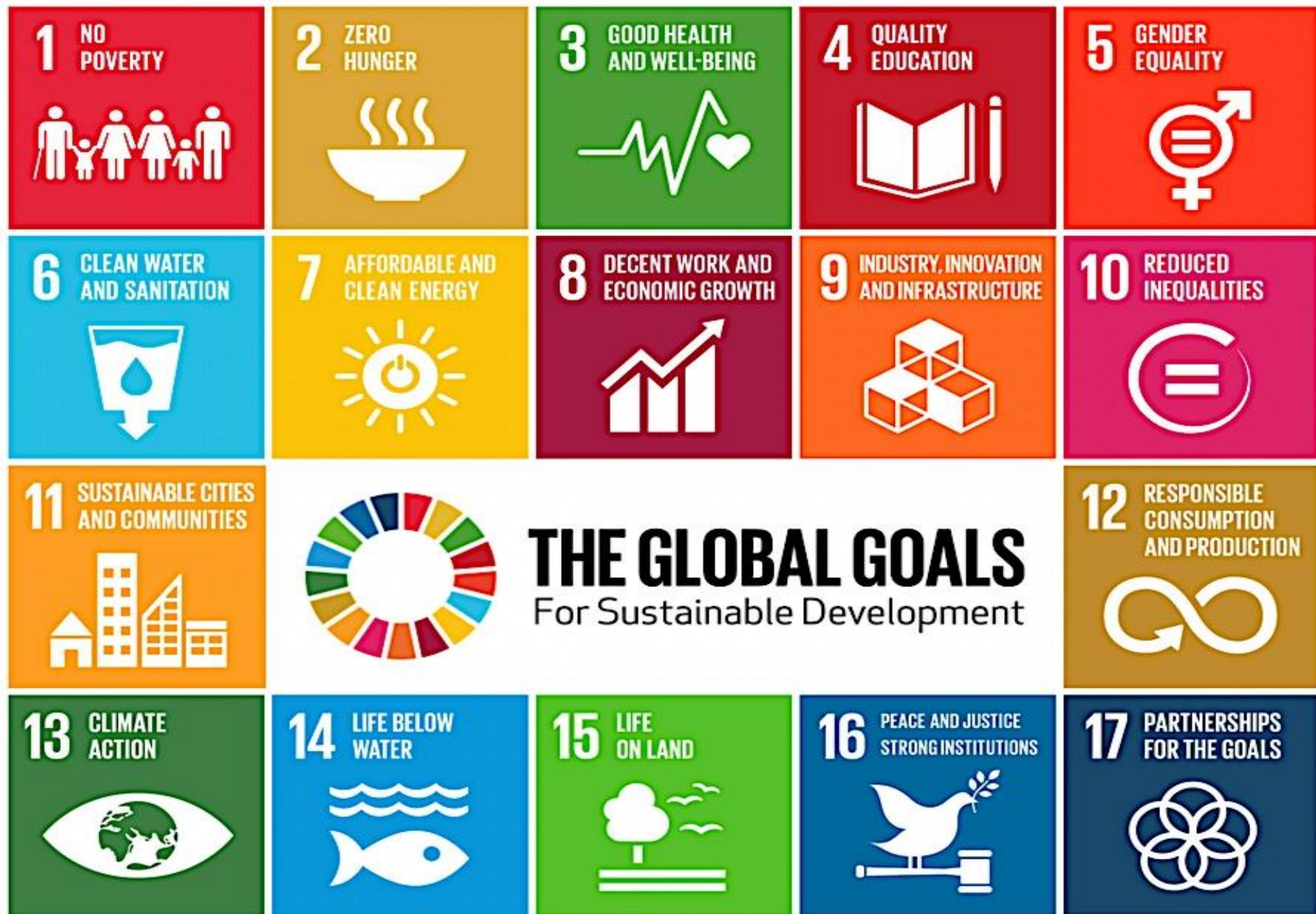
Biggest risks





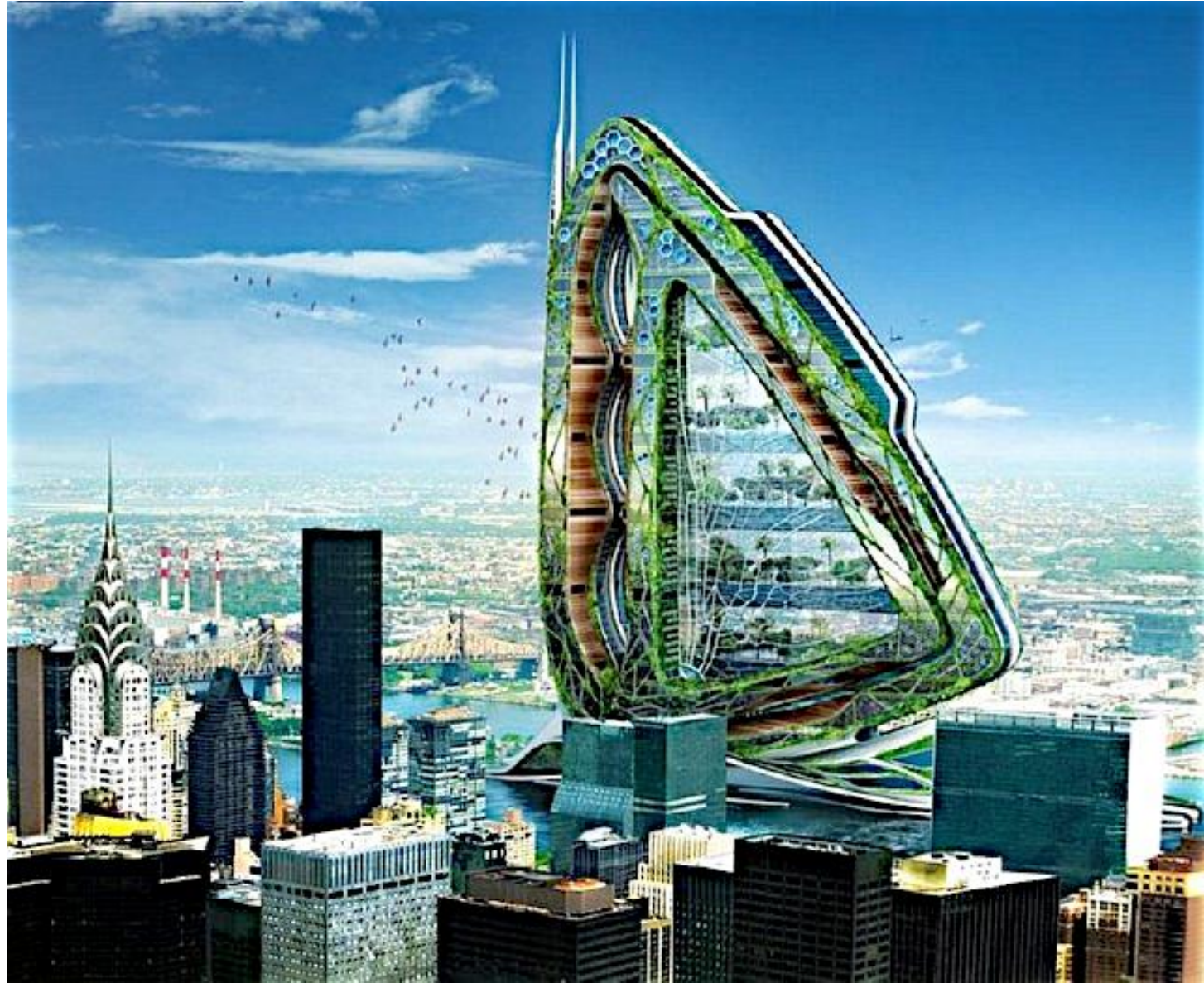
WELCOME
TO THE *Fabulous*
ANTHROPOCENE
ERA

United Nations' Sustainable Development Goals



Cities will have to change fundamentally

- ...bringing nature back into cities
- ...making them largely sufficient for energy, food and other resources
- ...be delightful, inspiring places to live and work
- ...to restore our relationship with the ecosystem





The 501(c)(3) research institute accelerating breakthroughs in cellular agriculture.

New Harvest 2016: Conference

About >

Portfolio >

Grant Opportunities >

Resources >

Contact

Email



Join our mailing list



• www.new-harvest.org

BUILDING THE FIELD OF CELLULAR AGRICULTURE.

Donate



**MILK
WITHOUT
COWS**



**EGGS
WITHOUT
HENS**



**BEEF
WITHOUT
COWS**

And much more...

We strategically fund and conduct open, public, collaborative research that reinvents the way we make animal products - without animals.

Sogo Department Store Beijing





COMVITA 康維他
新西蘭天然之源

COMVITA 新西兰蜂产品



康維他
再享加上9折优惠



COMVITA

康維他
源自新西蘭天然健康品牌



5 items - NZ\$750




 编号 15511
 品名 礼盒
 规格 一
 产地 新西兰
 等级 一等
 单位 盒
 零售价 3031.00
 物价员 张宝华
 北京市发展和改革委员会 监制号 Z04-18-9

Tuhoe's Te Uru Taumatua

- ...the first Living Building in New Zealand...doing things in very NZ distinctive ways



