

OUR LAND
AND WATER

Tōitū te Whenua,
Tōiora te Wai

Vision Mātauranga and the Our Land & Water National Science Challenge

Tanira Kingi
Scion



VM and the OLW Challenge

to unlock the innovation potential of Māori knowledge, resources and people to assist New Zealanders to create a better future.

Theme Purpose

To discover the potential contribution of iwi and hapū relationships with land and sea to environmental sustainability.

Theme Objective

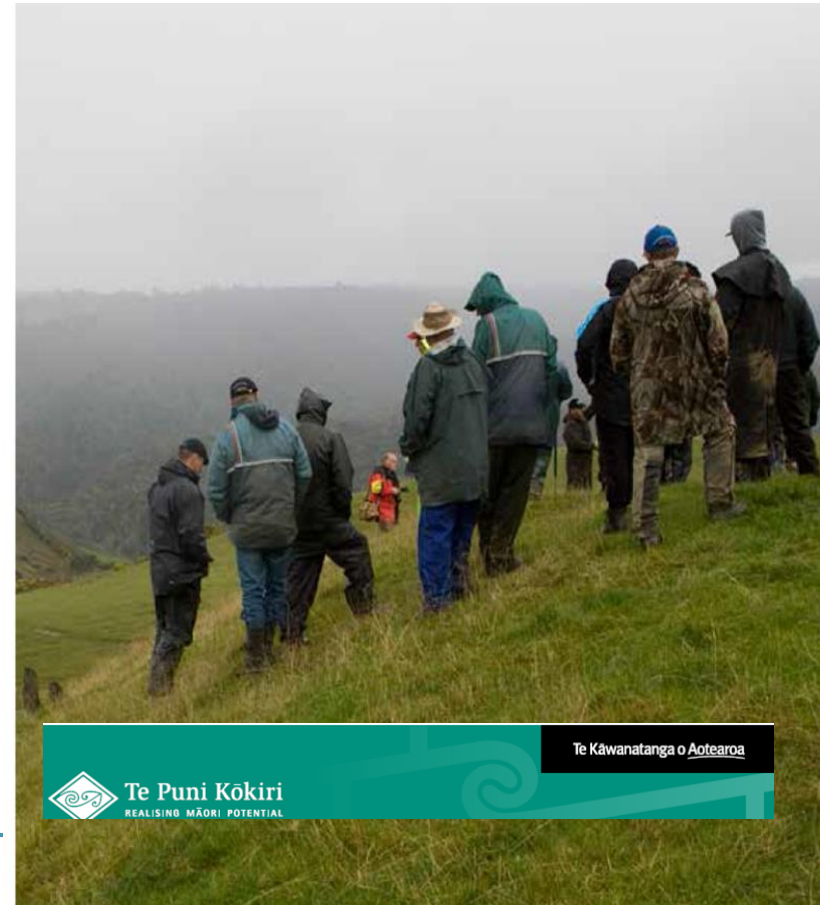
To discover distinctive and successful approaches to environmental sustainability by exploring iwi and hapū relationships with land and sea, and kaitiakitanga – an emerging approach to environmental management on the basis of traditional values, principles and concepts.

Vision Mātauranga

Unlocking the Innovation Potential of Māori Knowledge, Resources and People

Māori sector (agribusiness & communities) context 2017

1. Greater number of PSGEs in the in the agribusiness sector
2. Increase in the number of COLLECTIVES made up iwi and economic authorities
3. Influence on agribusiness industry (e.g. FoMA)
4. Influence on freshwater policy at central an regional Govt (e.g. Iwi Leaders Group)
5. Māori relationship to land and water



 Te Puni Kōkiri
REALISING MĀORI POTENTIAL

Te Kāwanatanga o Aotearoa

National
Science
Challenges

OUR LAND
AND WATER

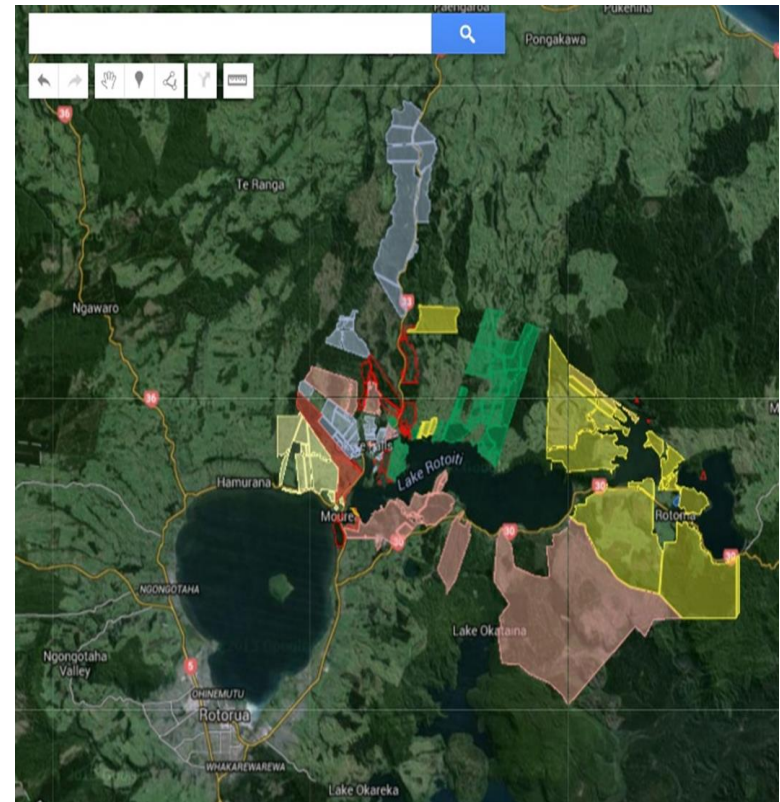
Toitū te Whenua,
Toiora te Wai

Aspirations of the Māori sector for the OL&W Challenge (2014)

Māori have the **CAPACITY** to co-develop solutions to meet their land owner/community aspirations

MĀTAURANGA MĀORI is recognised, respected and **INTEGRATED** into land and water policy decision-making

PARTNERSHIPS with Māori organisations in land & water projects that are consistent with Māori aspirations;

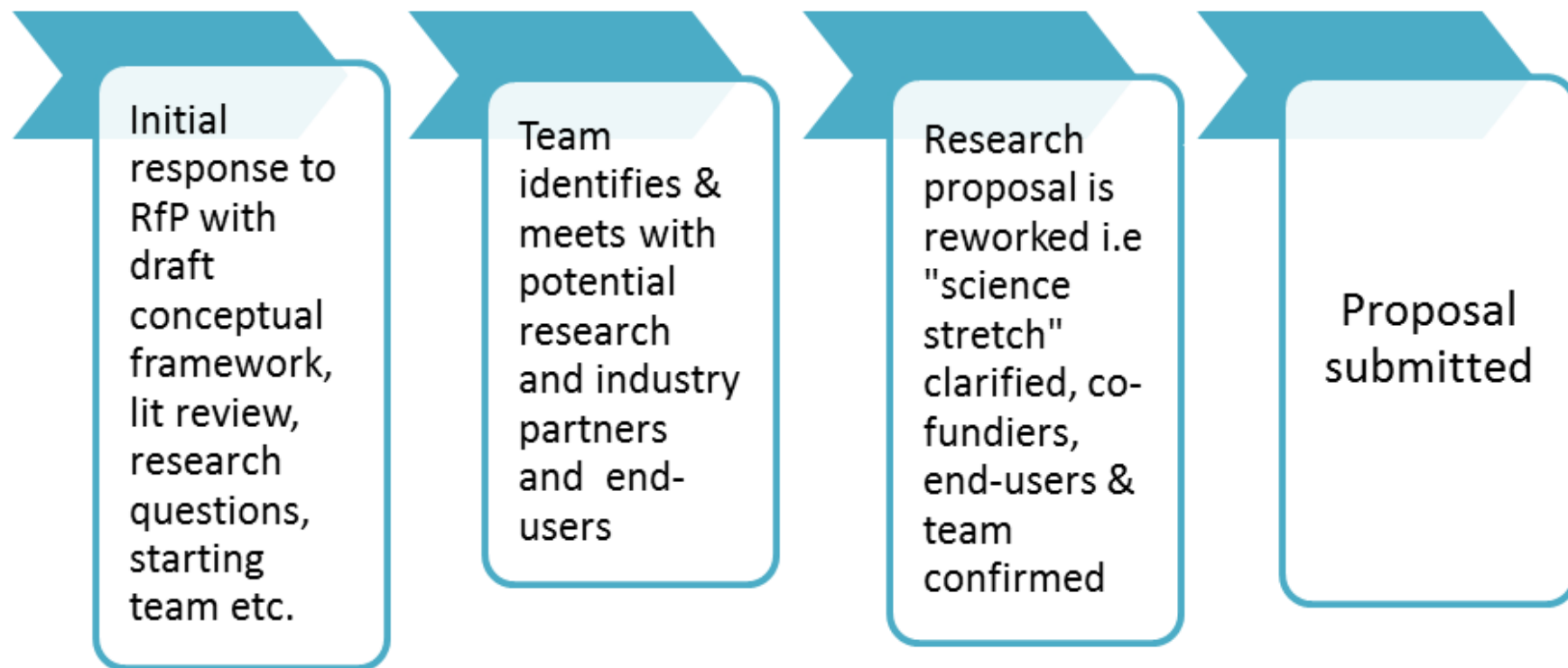


**“Vision Matauranga is generated in partnership
with Māori communities”**

**“Mātauranga Māori is the distinctive set of
circumstances within Māori communities; it
includes (but is not restricted to) traditional or
cultural knowledge....”**

Charles Royal, Auckland University,
4 November 2016

The 'research proposal writing process'



**This is the point that
Māori are bought
into the picture**

The VM research process: Starting Points

KAUPAPA MAORI

Networks and relationships with Māori communities and scientists; Research design agreed within a tikanga Māori process

FOCUSED

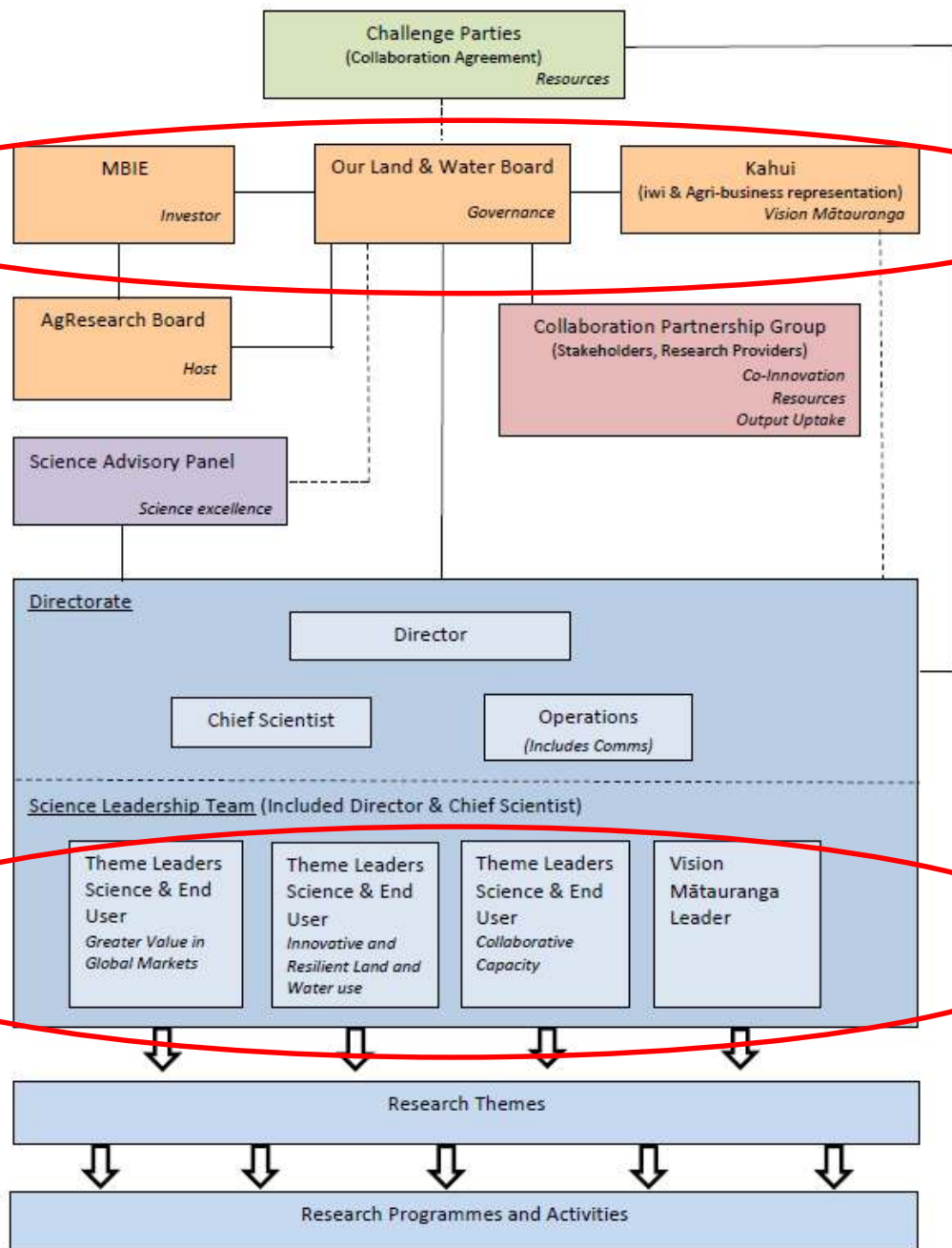
Māori knowledge systems & concepts integrated into the research approach and design

SHAPED

Māori relevance and application of the research recognized; Māori scientists included in the design and approach

AUGMENTED

Research direction and agenda determined; Māori science expertise incorporated into the team



OL&W
Structure
Confirmed
October 2016

CHALLENGE VM GOVERNANCE

Challenge Kāhui/Taumata

OUR LAND
AND WATER

Sir Toby Curtis (Chair) (Te Arawa), ILG

Jim Peters, (Ngati Wai), Auck Uni

Traci Houpapa, (Ngati Maniapoto), FoMA

Keith Ikin, (Ngati Maniapoto), Māori Land Service

Tiaki Hunia*, (Ngati Awa), Te Tumu Paeroa

Taria Tahana*, (Te Arawa), Te Puni Kokiri

* Retired

Challenge VM/Kaupapa Māori Advisors

Dr Merata Kawharu (Nga Puhi/Ngati Whatua), Otago University

Garth Harmsworth (Te Arawa), Landcare Research

Chris Koroheke (Ngati Maniapoto), AgResearch

Hirini Matunga (Kai Tahu), Lincoln University

Dr Tanira Kingi, (Te Arawa), Scion (Challenge VM Leader)

OL&W VM STRATEGY

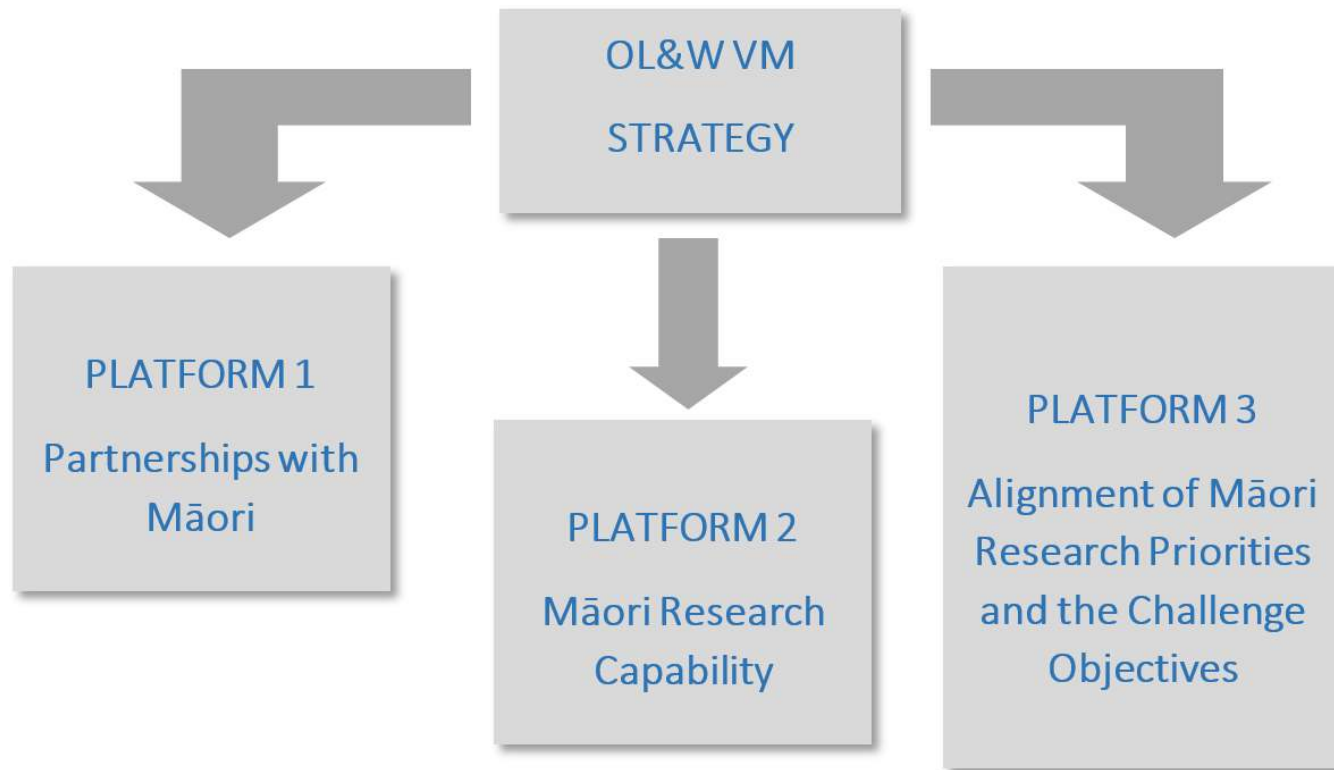


Figure 1: Strategic Platforms for the OL&W VM Strategy

KEY COMPONENTS TO A VM STRATEGY

1. Ensure the Kāhui are in a position to influence both the Challenge processes and alignment with Māori communities/organisations
2. Invest in Māori research with Māori communities
3. Invest in Māori researchers
4. Invest in all scientists capability to engage and work Māori communities
5. Partner with Māori organisations
6. Play the long game

National
SCIENCE
Challenges

OUR LAND
AND WATER

Tōitū te Whenua,
Tōiora te Wai

