



Manaaki Whenua  
Landcare Research

# **Tool for relating land use/management to sediment rating curve for the Manawatu catchment**

Prepared for: Our Land and Water, National Science Challenge

**July 2018**





# Tool for relating land use/management to sediment rating curve for the Manawatu catchment

*Contract Report: LC3397*

John Dymond, Simon Vale

*Manaaki Whenua – Landcare Research*

---

*Reviewed by:*

Raphael Spiekermann

Scientist

Manaaki Whenua – Landcare Research

*Approved for release by:*

Chris Phillips

Portfolio Leader – Managing Land & Water

Manaaki Whenua – Landcare Research

---

## **Disclaimer**

*This report has been prepared by Manaaki Whenua – Landcare Research for Our Land and Water, National Science Challenge. If used by other parties, no warranty or representation is given as to its accuracy and no liability is accepted for loss or damage arising directly or indirectly from reliance on the information in it.*

*©. This copyright work is licensed under the Creative Commons Attribution 4.0 International licence*



## Impact of sediment load on water clarity

Visual clarity of water is the distance (in metres) through water that objects can be seen. It is variable over time because it depends on suspended sediment concentration (SSC) that varies with river flow. Therefore, the median visual clarity is often used to characterise visual clarity at a site (Ballantine and Davies-Colley, 2009). When sediment loads in rivers are reduced through erosion mitigation (see references), SSC in the river will also reduce and median visual clarity will increase (Dymond et al. 2017).

To estimate increases in visual clarity due to reduced sediment load it is necessary to determine the relationship between visual clarity and SSC. Following Dymond et al. (2017), visual clarity ( $v$ ) is related to SSC ( $s$ ) by:

$$v = \exp(d) s^c \quad (1)$$

where  $d$  and  $c$  are constants at a given site on a river. To determine  $d$  and  $c$ , concurrent measurements of  $s$  and  $v$  are plotted in log-log space and a straight line fitted to the data. Figure 1 provides an example of this for the measurement site at Mangawhero at Raupiu Road. The gradient of the line is  $c$  and the intercept is  $d$ .

$$\log(v) = d + c \cdot \log(s) \quad (2)$$

If the sediment load at a river site is reduced to a fraction ( $frac$ ) of the baseline sediment load, then visual clarity will increase by the ratio  $frac^c$ . For example, if  $c = -0.5$  and sediment load reduces by 40% (i.e.  $frac = 0.6$ ), then visual clarity will increase by the ratio  $0.6^{-0.5} = 1.3$  (i.e. visual clarity will increase by 30%). Equation 2 was derived for different suspended sediment gauging sites and used to convert predictions of the effect of SLUI in reducing sediment load to predictions of the impact on visual clarity.



### Mangawhero at Raupiu Road

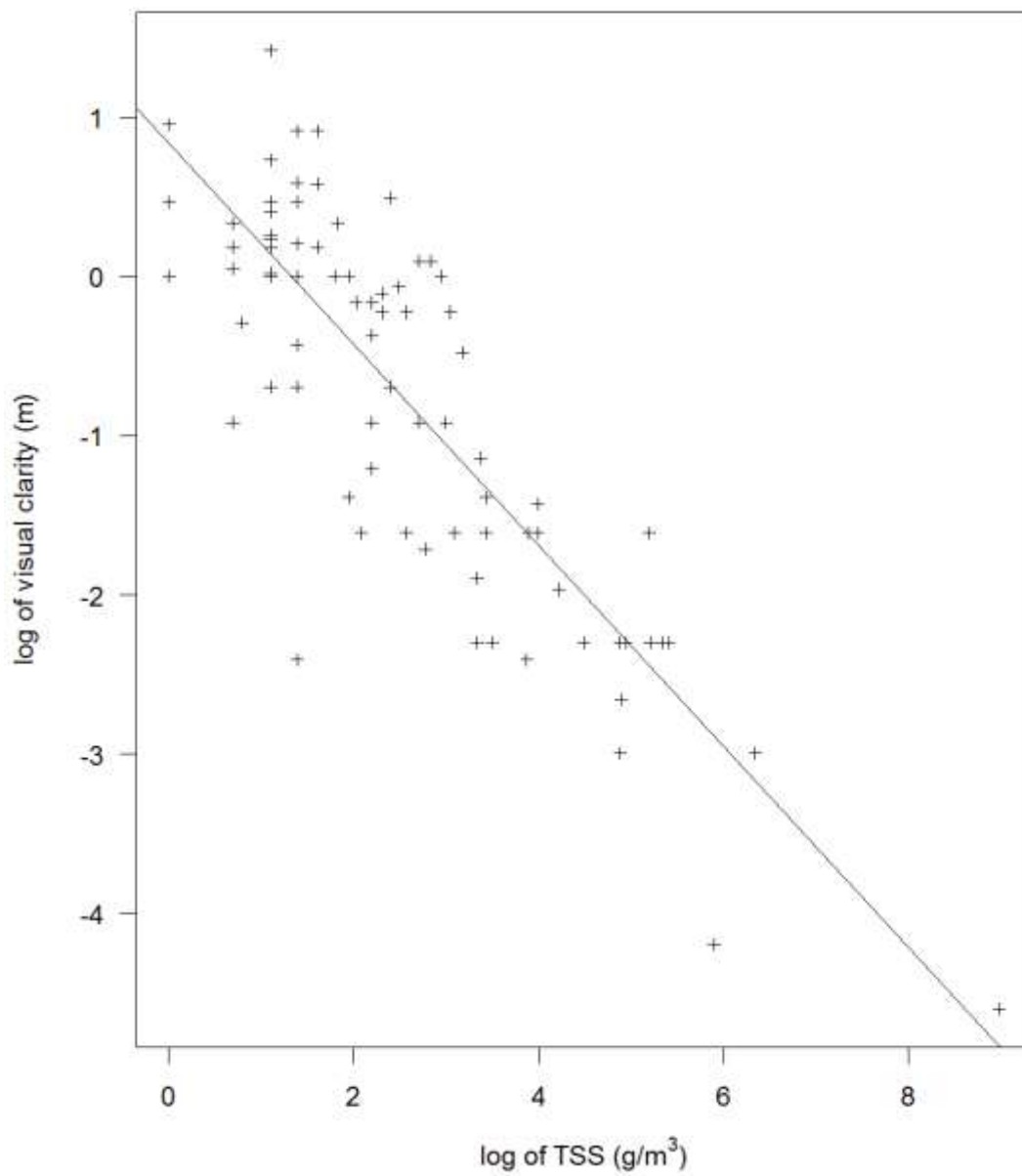


Figure 1. Relationship between visual clarity and suspended sediment concentration at the Mangawhero at Raupiu Road measurement site.

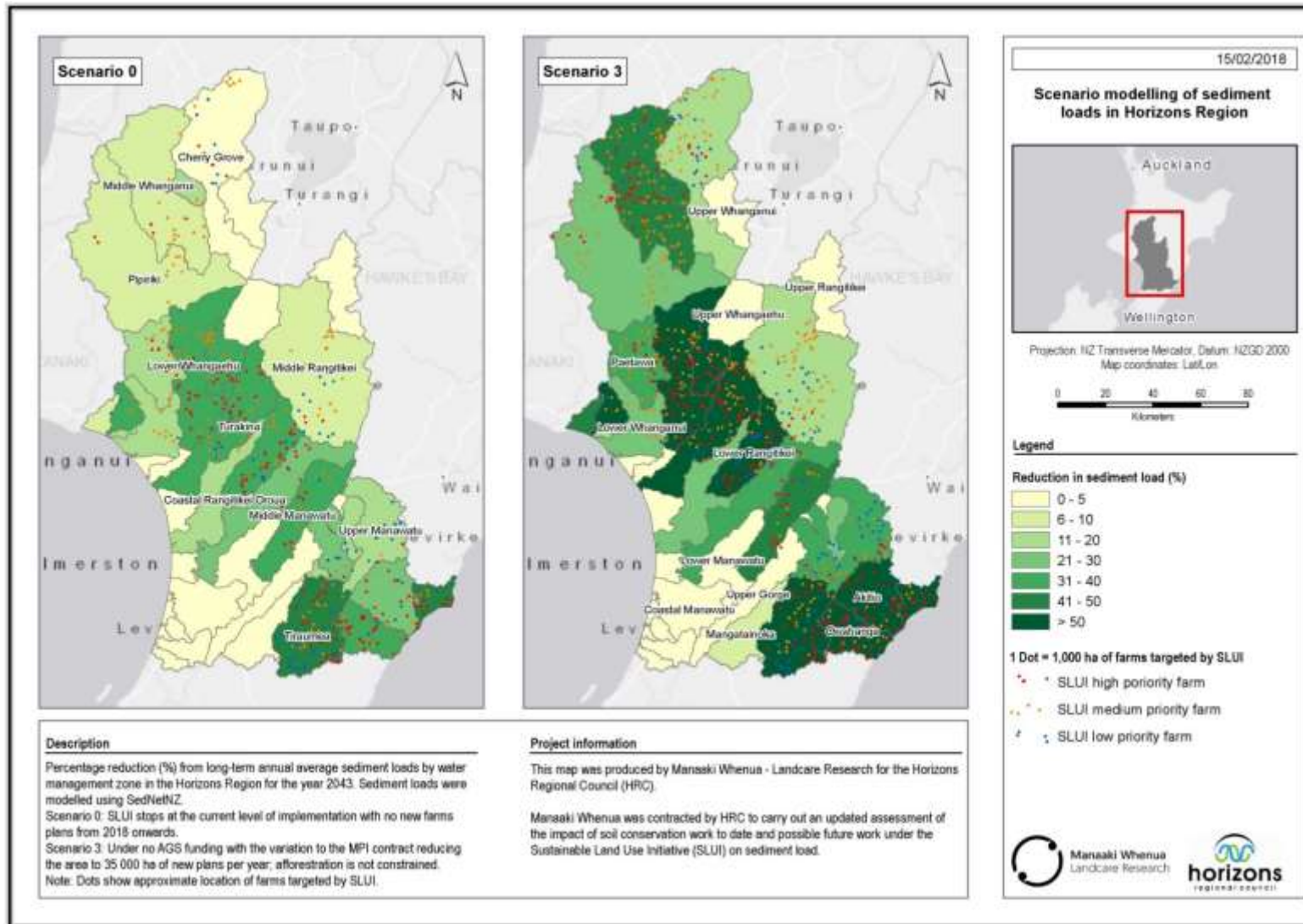


Figure 2. Example map showing percentage reductions of annual sediment loads for two different soil conservation scenarios by water management zone.



## **Assessing impact of soil conservation on water clarity in the Horizons region using the tool**

Modelled reductions in sediment yields from soil conservation scenarios (e.g. Fig. 2 – from Basher et al., 2018) and associated increases in visual clarity in rivers can be used to assess the impact of soil conservation upstream of the measurement sites in the rivers. These assessments are limited to rivers with measurement sites. The visual clarity tool (VisualClarityTool.xlsx) tabulates median water clarity for 84 measurement sites and associated water management zones and subzones in the Horizons region. Predicted median water clarity is shown in column “new median VC” and results from frac shown in column “frac”. Figure 3 (from Basher et al., 2018) shows median visual clarity at measurement sites and the predicted impact of example soil conservation scenarios 0 and 3. Figure 4 shows the same for the management subzones. The increase in visual clarity is based on the relationship between visual clarity and suspended sediment concentration summarised in columns E and F of the tool.

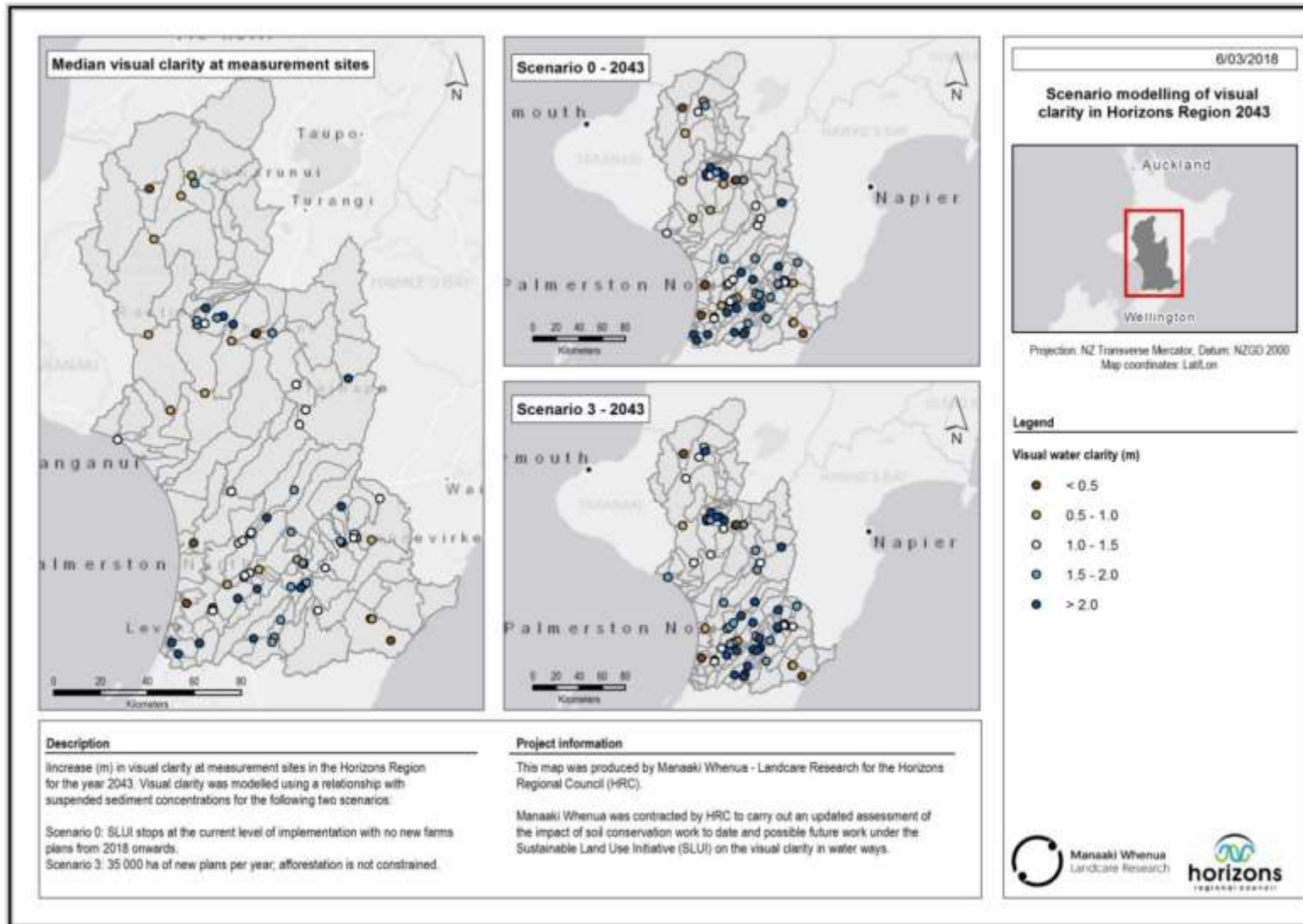


Figure 3. Example map showing modelled increase (m) in visual water clarity at measurement sites resulting from two soil conservation scenarios.

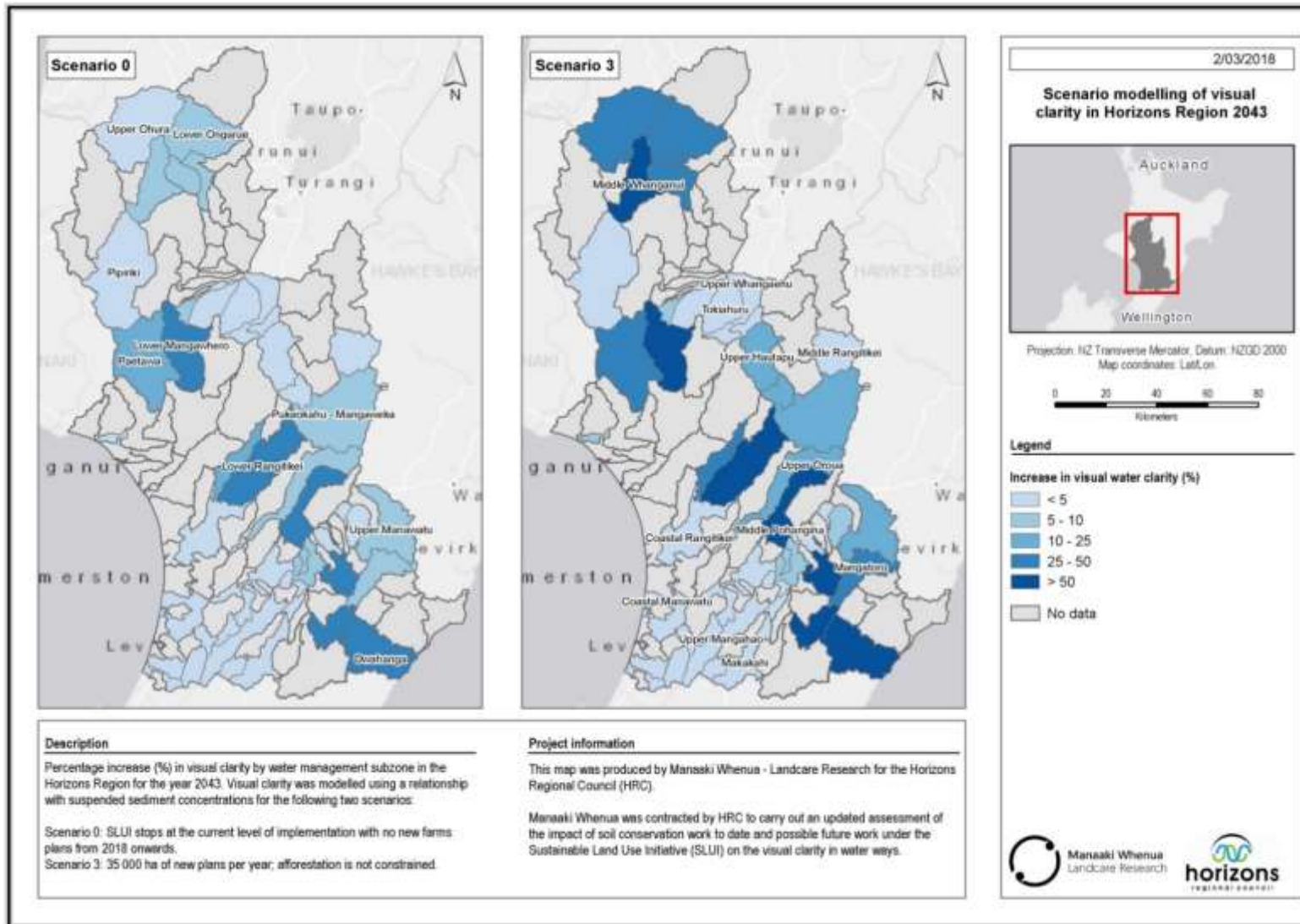


Figure 4. Example map showing modelled percentage increase in visual clarity in water management subzones resulting from two soil conservation scenarios.



Contents lists available at ScienceDirect

Science of the Total Environment

journal homepage: [www.elsevier.com/locate/scitotenv](http://www.elsevier.com/locate/scitotenv)

## Predicting improved optical water quality in rivers resulting from soil conservation actions on land



J.R. Dymond<sup>a,\*</sup>, R.J. Davies-Colley<sup>b</sup>, A.O. Hughes<sup>b</sup>, C.D. Matthaei<sup>c</sup>

<sup>a</sup> Landcare Research, Palmerston North, New Zealand

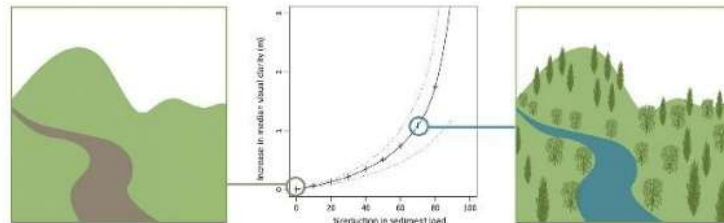
<sup>b</sup> National Institute of Water and Atmospheric Research (NIWA), Hamilton, New Zealand

<sup>c</sup> Department of Zoology, Otago University, Dunedin, New Zealand

### HIGHLIGHTS

- Optical water quality in rivers can be related to sediment loads.
- Improved optical water quality may be predicted from soil conservation.
- In the Wairua River, visual clarity will increase 0.5 m after soil conservation.

### GRAPHICAL ABSTRACT



### ARTICLE INFO

#### Article history:

Received 16 March 2017

Received in revised form 13 June 2017

Accepted 14 June 2017

Available online xxx

Editor: D. Barcelo

#### Keywords:

Soil erosion

Soil conservation

River sediment

Water quality

Visual clarity

Euphotic depth

### ABSTRACT

Deforestation in New Zealand has led to increased soil erosion and sediment loads in rivers. Increased suspended fine sediment in water reduces visual clarity for humans and aquatic animals and reduces penetration of photosynthetically available radiation to aquatic plants. To mitigate fine-sediment impacts in rivers, catchment-wide approaches to reducing soil erosion are required. Targeting soil conservation for reducing sediment loads in rivers is possible through existing models; however, relationships between sediment loads and sediment-related attributes of water that affect both ecology and human uses of water are poorly understood. We present methods for relating sediment loads to sediment concentration, visual clarity, and euphotic depth. The methods require upwards of twenty concurrent samples of sediment concentration, visual clarity, and euphotic depth at a river site where discharge is measured continuously. The sediment-related attributes are related to sediment concentration through regressions. When sediment loads are reduced by soil conservation action, percentiles of sediment concentration are necessarily reduced, and the corresponding percentiles of visual clarity and euphotic depth are increased. The approach is demonstrated on the Wairua River in the Northland region of New Zealand. For this river we show that visual clarity would increase relatively by approximately 1.4 times the relative reduction of sediment load. Median visual clarity would increase from 0.75 m to 1.25 m (making the river more often suitable for swimming) after a sediment load reduction of 50% associated with widespread soil conservation on pastoral land. Likewise euphotic depth would increase relatively by approximately 0.7 times the relative reduction of sediment load, and the median euphotic depth would increase from 1.5 m to 2.0 m with a 50% sediment load reduction.

© 2017 Elsevier B.V. All rights reserved.

### 1. Introduction

There is widespread recognition of the extent and significance of changes in land use and land cover on river ecosystems worldwide (Allan, 2004; Jones et al., 2012; Kemp et al., 2011; Wood and Armitage,

\* Corresponding author.

E-mail address: [dymondj@landcareresearch.co.nz](mailto:dymondj@landcareresearch.co.nz) (J.R. Dymond).

## References

- Ausseil A-GE, Dymond JR 2008. Estimating the spatial distribution of sediment concentration in the Manawatu River, New Zealand, under different land-use scenarios. IAHS Publication 325: 502–509.
- Ballantine DJ, Davies-Colley RJ 2009. Water quality trends at NRWQN sites for the period 1989–2007. NIWA Client Report HAM2009-026 for Ministry for the Environment.
- Basher L, Spiekermann R, Dymond JR, Herzig A, Hayman E, Ausseil A-G, 2018. SedNetNZ, SLUI and contaminant generation. Part1: Sediment and water clarity. Manaaki Whenua – Landcare Research contract report LC3135 for Horizons Regional Council.
- Betts HD, Basher L, Dymond JR, Herzig A, Marden M, Phillips CJ 2017. Development of a landslide component for a sediment budget model. *Environmental Modelling and Software* 92: 28–39.
- Betts HD, DeRose RC 1999. Digital elevation models as a tool for monitoring and measuring gully erosion. *International Journal of Applied Earth Observation and Geoinformation* 1: 91–101.
- DeRose RC, Basher LR 2011a. Strategy for the development of a New Zealand SedNet. Landcare Research Contract Report LC226 for AgResearch and Ministry of Science and Innovation.
- DeRose RC, Basher LR 2011b. Measurement of river bank and cliff erosion from sequential LIDAR and historical aerial photography. *Geomorphology* 126: 132–147.
- Douglas G, Dymond J, McIvor I 2008. Monitoring and reporting of whole farm plans as a tool for affecting land use change. Report for Horizons Regional Council. Palmerston North, AgResearch.
- Dymond J 2010. Soil erosion in New Zealand is a net sink of CO<sub>2</sub>. *Earth Surface Processes and Landforms* 35: 1763–1772.
- Dymond JR, Betts HD, Schierlitz CS 2010. An erosion model for evaluating regional land-use scenarios. *Environmental Modelling and Software* 25: 289–298.
- Dymond JR, Davies-Colley RJ, Hughes A, Matthaei CD 2017. Predicting improved optical water quality in rivers resulting from soil conservation actions on land. *Science of the Total Environment* 603–604: 584–592.
- Dymond JR, Herzig A, Ausseil A-G 2014. Using SedNetNZ to assess the impact of the Sustainable Land Use Initiative in the Manawātū–Wanganui region on river sediment loads. Landcare Research Contract Report LC1895 for Horizons Regional Council.
- Dymond JR, Herzig A, Basher L, Betts HD, Marden M, Phillips CJ, Ausseil A-G, Palmer DJ, Clark M, Roygard J 2016. Development of a New Zealand SedNet model for assessment of catchment-wide soil-conservation works. *Geomorphology* 257: 85–93.
- Dymond J, Herzig A, Betts H, Marden M, Phillips C, Basher L 2013a. Application of SedNetNZ for the assessment of critical source areas in the Manawatu catchment. Landcare Research Contract Report LC1697 for AgResearch and MBIE.

- Dymond J, Herzig A, Betts H, Marden M, Phillips C, Basher L 2013b. Parameterisation of SedNetNZ for the Manawatu catchment. Landcare Research Contract Report LC1503 for AgResearch and MBIE.
- Dymond J, Manderson A 2015. Updated SedNetNZ estimate according to SLUI 2015 WFP coverage. Letter (Landcare Research Contract Report LC2435) to Horizons Regional Council.
- Dymond J, Manderson A 2016. Downscaling sediment yields from 1:50,000 to farm-scale using LUC units. Unpublished report for Horizons Regional Council, Palmerston North, Landcare Research.
- Elliott AH, Basher LR 2011. Modelling sediment flux: a review of New Zealand catchment-scale approaches. *Journal of Hydrology (NZ)* 50: 143–160.
- Elliott AH, Shankar U, Hicks DM, Woods RA, Dymond JR 2008. SPARROW regional regression for sediment yields in New Zealand rivers. *IAHS Publication* 325: 242–249.
- Fuller IC, Marden M 2010. Rapid channel response to variability in sediment supply: cutting and filling of the Tarndale Fan, Waipaoa catchment, New Zealand. *Marine Geology* 270: 45–54.
- Griffiths GA 1981. Some suspended sediment yields from South Island catchments, New Zealand. *Water Resources Bulletin* 17: 662–671.
- Griffiths GA 1982. Spatial and temporal variability in suspended sediment yields of North Island basins, New Zealand. *Journal of the American Water Resources Association* 18: 575–584.
- Hancox GT, Wright K 2005. Analysis of landsliding caused by the 15–17 February 2004 rainstorm in the Wanganui–Manawatu hill country, southern North Island, New Zealand. Institute of Geological & Nuclear Sciences Science Report 2005/11.
- Hawley JG, Dymond JR 1988. How much do trees reduce landsliding? *Journal of Soil and Water Conservation* 43: 495–498.
- Hicks DL 1991. Erosion under pasture, pine plantations, scrub and indigenous forest: a comparison from cyclone Bola. *New Zealand Forestry* 36: 21–22.
- Hicks DL 1995. Control of soil erosion. Ministry of Agriculture Publication 95/4. Wellington, Ministry of Agriculture.
- Hicks DM 2011. Review of turbidity and suspended sediment monitoring at Horizons Regional Council. NIWA Client Report CHC2011-021 for Horizons Regional Council.
- Hicks DM, Hill J, Shankar U 1996. Variation of suspended sediment yields around New Zealand: the relative importance of rainfall and geology. In: *Erosion and Sediment Yield: Global and Regional Perspectives*. IAHS Publication No. 236: 149–156.
- Hicks DM, Shankar U 2003. Sediment yield from New Zealand rivers. NIWA Chart Miscellaneous Series No. 79. Wellington, NIWA.
- Hicks DM, Shankar U, McKerchar AI, Basher L, Jessen M, Lynn I, Page M 2011. Suspended sediment yields from New Zealand rivers. *Journal of Hydrology (NZ)* 50: 81–142.

- Hicks M, Hoyle J 2012. Analysis of suspended sediment yields from the rivers in the Horizons sediment monitoring program. Horizons Report No. 2012/EXT/1284. Palmerston North, Horizons Regional Council.
- Manderson A, Douglas G, Mackay A, Dymond J 2011. SLUI Outcomes project: review of the SLUI database and development of a SLUI outcomes reporting framework. Report prepared for Horizons Regional Council by AgResearch.
- Manderson A, Dymond J, Ausseil A-G 2015. Climate change impacts on water quality outcomes from the Sustainable Land Use Initiative (SLUI). Landcare Research Contract Report LC2302 for Horizons Regional Council.
- Marden M, Betts HD, Arnold G, Hambling R 2008. Gully erosion and sediment load: Waipaoa, Waiapu and Uawa Rivers, eastern North Island, New Zealand. In: *Sediment Dynamics in Changing Environments*. Proceedings of a symposium held in Christchurch, New Zealand, December 2008. IAHS Publication 325: 339–350.
- Marden M, Herzig A, Arnold G 2011. Gully degradation, stabilisation and effectiveness of reforestation in reducing gully-derived sediment, East Coast region, North Island, New Zealand. *Journal of Hydrology (NZ)* 50: 19–36.
- McIvor I, Douglas G, Dymond J, Eyles G, Marden M 2011. Pastoral hillslope erosion in New Zealand and the role of poplar and willow trees in its reduction. In: *Soil erosion issues in agriculture*. Pp. 257–278. <http://www.intechopen.com/articles/show/title/pastoral-hill-slope-erosion-in-new-zealand-and-the-role-of-poplar-and-willow-trees-in-its-reduction>.
- Page M 2008. A bibliography of 'rainfall-induced' landslides in New Zealand. GNS Science Report 2008/08. Wellington, GNS Science.
- Page M, Shepherd J, Dymond J, Jessen M 2005. Defining highly erodible land for Horizons Regional Council. Landcare Research Contract Report LC0506/050 for Horizons Regional Council.
- Reid LM, Page MJ 2003. Magnitude and frequency of landsliding in a large New Zealand catchment. *Geomorphology* 49: 71–88.
- Schierlitz C 2008. New Zealand Empirical Erosion Model (NZeem®): analysis, evaluation and application in climate change scenarios. Unpublished diplomarbeit (thesis), University of Bonn, Germany.
- Schierlitz C, Dymond J, Shepherd J 2006. Erosion/sedimentation in the Manawatu catchment associated with scenarios of whole farm plans. Landcare Research Contract Report 0607/028 for Horizons Regional Council.
- Thompson RC, Luckman PG 1993. Performance of biological erosion control in New Zealand soft rock hill terrain. *Agroforestry Systems* 21: 191–211.